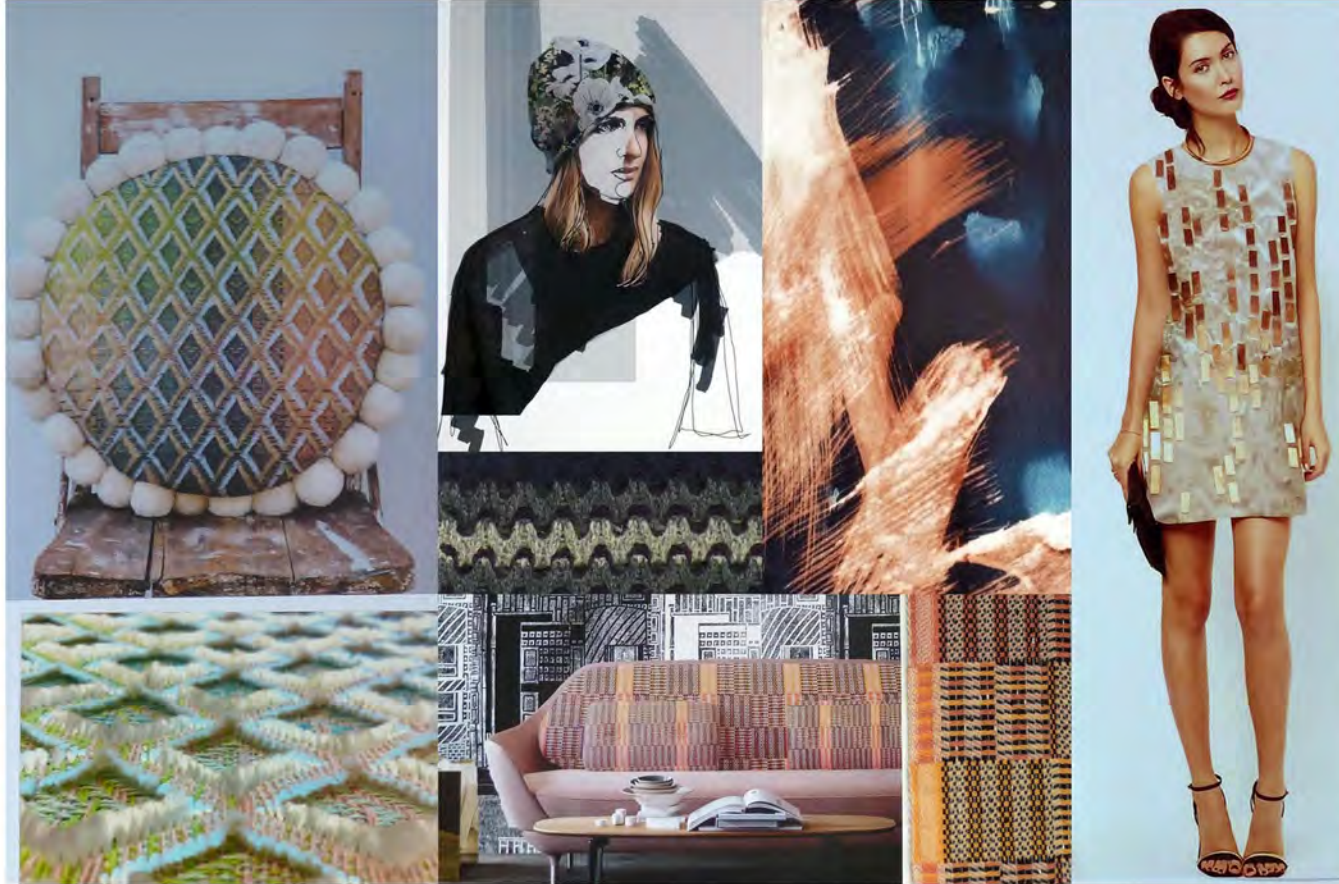


THE DESIGN COMPETITION 2017 - 2018



organised by

THE BRADFORD TEXTILE SOCIETY



**THE
BRADFORD TEXTILE SOCIETY
DESIGN COMPETITION
2017 - 2018**

CONTENTS

List of Sponsors		Page 1
Welcome		Page 2
Categories for Embroidery:	E1 P2, C1	Page 3 , 5, 10
Categories for Knit:	K1, K2 , AW1, B1	Page 4 , 7, 8
Categories for Print:	P1, P2, P3	Page 5
Categories for Weave:	W1-F, W1-N, W2 , P2, AW1, B1	Page 6 , 5, 7, 8
Categories for Designs using Wool:	AW1, B1	Pages 7, 8
Category for Historical Inspiration:	H1	Page 9
Categories for Combined Processes:	C1	Page 10
Categories for Multi-Media and/or new Technologies:	U1	Page 10
Categories for Textile Design and Illustration:	F1	Page 11
Merchants of the Staple of England Wool Award.....		Page 12
Special Awards		Page 13, 14
Conditions of Entry		Pages 15, 16
Guidance Notes and Return of Work		Pages 17, 18, 19
Recommended Technical Details		Page 20
Forms	Board Labels; Registration Form; Multiple Entry Form.	

**THE
BRADFORD TEXTILE SOCIETY
DESIGN COMPETITION
2017 - 2018**

SPONSORS OF THE DESIGN COMPETITION

Bradford College

British Wool

J H Clissold & Son Limited

LAPA Charitable Trust

Luxury Fabrics Limited

Prestigious Textiles Limited

RSM

Schofield Sweeney

The Association of Fashion and Textile Courses

The British Textile Designers' Guild

The Campaign for Wool

The Clothworkers' Foundation

The Company of Merchants of the
Staple of England Charitable Trust

The Cotton Industry War Memorial Trust

The Retail and Textile Company

The Woolmark Company

The Worshipful Company of Dyers

Bradford Textile Society would like to thank all the Sponsors for their participation and generous support of the Design Competition.

**THE
BRADFORD TEXTILE SOCIETY**



**DESIGN COMPETITION
2017 – 2018**

WELCOME

This Prospectus Pack includes all the relevant information to enter the Design Competition 2017 – 2018.

If you have any queries or comments please do not hesitate to contact us by email (details p.15) The document contains 20 pages in total + 3 pages of Forms.

The number of sections has risen this year from 12 to 16. **Please be aware of the following changes and new briefs.**

Due to the very high number of entries for the W1 Weave section last year we have kindly been given extra funding from the Clothworkers' Foundation to split **W1** into 2 new sections, each with its own prize fund:

W1-F A woven fabric design for fashion. (Page 6) **W1-N** A woven fabric design for interiors. (Page 6)

We are delighted to announce a totally new section for hand-embroidered designs – section **E1** (Page 3) and the return of the Bradford Textile Archive Award - **H1** for a contemporary furnishing design inspired by an historical source. (Page 9)

Finally, The Company of Merchants of the Staple of England is sponsoring a Special Award of £1000 for the best design, from **all the sections**, if the design entered contains a minimum of 60% wool. The Entrant must indicate on their Registration Form that they wish to be considered for this Award, as well as the section of original entry, and sign to say that the requirements of the brief have been fulfilled. The Technical Notes for the design must give evidence of the wool content – please see page 12 for the Brief and requirements.

The Contents page gives a quick guide to what is included in this prospectus and details of all the categories and relevant sections for the different categories.

Also included are the forms needed to enter - Registration Form, Board Labels and a Multiple-Entry Form.

- PLEASE COMPLETE **ONE** REGISTRATION FORM PER ENTRY, **NOT**, PER BOARD
- PLEASE COMPLETE A BOARD LABEL FOR **EACH** BOARD USED IN YOUR ENTRY
- THE MULTIPLE-ENTRY FORM MAY BE USED BY EDUCATIONAL ESTABLISHMENTS SUBMITTING MULTIPLE ENTRIES OR INDIVIDUALS SUBMITTING MULTIPLE ENTRIES

COMPETITION CATEGORIES FOR

EMBROIDERY



E1 LAPA CHARITABLE TRUST AWARD

An embroidered textile design for fashion or interior products, created using hand embroidery techniques. It may include hand-embellishment, appliqué, beading etc but NOT machine embroidery. A sample of the hand embroidery must be included, together with an illustration of the final design/product.

A finished product is NOT required.

1st Prize: £500 + certificate 2nd Prize: £300 + certificate 3rd Prize: £200 + certificate
Certificates of Commendation are also awarded at the discretion of the Judges.

Please see also Section P2 in the Print Categories.

Please see also Section C1.



K1 CLOTHWORKERS' FOUNDATION AWARD



A knitted fabric design for either fashion or interiors.

1st Prize: £500 + certificate **2nd Prize:** £300 + certificate **3rd Prize:** £200 + certificate
Certificates of Commendation are also awarded at the discretion of the Judges.

K2 THE STAPLE OF ENGLAND AWARD – 1st year undergraduate students only



A knitted fabric design which shows creative potential.

1st Prize: £250 + certificate **2nd Prize:** £150 + certificate **3rd Prize:** £100 + certificate
Certificates of Commendation are also awarded at the discretion of the Judges.

Please see also Sections AW1 and B1.

COMPETITION CATEGORIES FOR

PRINT



P1 THE WORSHIPFUL COMPANY OF DYERS AWARD

A printed textile design for fashion submitted on any base fabric.

1st Prize: £500 + certificate **2nd Prize:** £300 + certificate **3rd Prize:** £200 + certificate
Certificates of Commendation are also awarded at the discretion of the Judges.



P2 PRESTIGIOUS TEXTILES LTD AWARD

A textile design suitable for domestic curtains, upholstery, cushions and blinds, drawn in repeat. This can be either a printed design using digital or conventional printing, a woven jacquard or woven plain, or for drapery only, an embroidery.

1st Prize: 1 week placement in the Design Studios of Prestigious Textiles Ltd + £500 + certificate **2nd Prize:** £300 + certificate **3rd Prize:** £200 + certificate
Certificates of Commendation are also awarded at the discretion of the Judges.



P3 CLOTHWORKERS' FOUNDATION AWARD – 1st year undergraduate students only

A printed textile design for either fashion or interiors which shows creative potential.

1st Prize: £300 + certificate **2nd Prize:** £200 + certificate **3rd Prize:** £150 + certificate
Certificates of Commendation are also awarded at the discretion of the Judges.



W1-F CLOTHWORKERS' FOUNDATION AWARD



A woven fabric design for fashion.

1st Prize: £500 + certificate **2nd Prize:** £300 + certificate **3rd Prize:** £200 + certificate
Certificates of Commendation are also awarded at the discretion of the Judges.

W1-N CLOTHWORKERS' FOUNDATION AWARD



A woven fabric design for interiors.

1st Prize: £500 + certificate **2nd Prize:** £300 + certificate **3rd Prize:** £200 + certificate
Certificates of Commendation are also awarded at the discretion of the Judges.

W2 JOSEPH H. CLISSOLD LTD AWARD – 1st year undergraduate students only



A woven fabric design which shows creative potential.

1st Prize: £250 + certificate **2nd Prize:** £150 + certificate **3rd Prize:** £100 + certificate
Certificates of Commendation are also awarded at the discretion of the Judges.

Please see also Section P2 in the Print Categories.

Please see also Sections AW1 and B1.



COMPETITION CATEGORIES FOR

CONSTRUCTED TEXTILES USING
WOOL

Sections AW1 and B1 are for constructed fabrics which have wool as their main component.

The fabric may be woven, knitted, crocheted or of any method of construction you choose, so long as it conforms to the specified brief for the section entered and contains the required proportion of specified wool.

AW1 entries MUST contain a minimum of 60% MERINO WOOL.

B1 entries MUST contain a minimum of 80% BRITISH WOOL.

AW1 THE WOOLMARK COMPANY AWARD



A textile design for a wool-rich fabric which can be used for fashion/accessories or for interior furnishings. The fabric must contain a minimum 60% Merino wool and highlight the versatility and natural benefits of the luxury fibre.

1st Prize: 1 week placement in a design studio (with £600 to cover expenses) + certificate **2nd Prize:** £250 + certificate **3rd Prize:** £150 + certificate

Certificates of Commendation are also awarded at the discretion of the Judges.

COMPETITION CATEGORIES FOR

CONSTRUCTED TEXTILES USING
WOOL

B1 THE BRITISH WOOL AWARD



A fabric of any construction for fashion or interiors which demonstrates the versatility of British wool. The final design must contain a minimum of 80% British wool. A maximum of 20% of other materials may be added to enhance the design technically.

British wool is available for entrants to use in their designs, free-of-charge, from the British Wool organisation. Please request a sample pack from haldikw@britishwool.org.uk to make your selection.

Alternatively, entrants may source their own British wool but must demonstrate in their technical notes that it is British wool. The wool may be left its natural colour or dyed as required for the design.

1st Prize: £500 + certificate **2nd Prize:** £300 + certificate **3rd Prize:** £200 + certificate
Certificates of Commendation are also awarded at the discretion of the Judges.



COMPETITION CATEGORY FOR

HISTORICAL
INSPIRATION



H1 THE BRADFORD COLLEGE AWARD

For best student design using an historical source to inspire a contemporary furnishing fabric.

The design may be for a printed or woven fabric but natural fibres must be used. The finished design and its intended end-use should be illustrated on A1 mount board.

The source is to be chosen by the student. Full technical details are required and the historical source used should be illustrated and referenced.

Prize £250

The winning entry will be exhibited at The College's Dye House Gallery at a mutually agreed time and the Winner will be offered a Research Day in the Bradford College Textile Archive.

Certificates of Commendation are also awarded at the discretion of the Judges.



COMPETITION CATEGORY FOR

**COMBINED
PROCESSES**
(may include embroidery)

C1 CLOTHWORKERS' FOUNDATION AWARD



A fabric design for fashion or interiors which shows an innovative combination of TEXTILE processes.

1st Prize: £500 + certificate **2nd Prize:** £300 + certificate **3rd Prize:** £200 + certificate
Certificates of Commendation are also awarded at the discretion of the Judges.



COMPETITION CATEGORY FOR

**MULTI-MEDIA CONSTRUCTION
or NEW TECHNOLOGIES**

U1 CLOTHWORKERS' FOUNDATION AWARD



A material construction, for either fashion or interior products, produced by non-conventional processes and/or materials or by new technologies.

1st Prize: £500 + certificate **2nd Prize:** £300 + certificate **3rd Prize:** £200 + certificate
Certificates of Commendation are also awarded at the discretion of the Judges.



COMPETITION CATEGORY FOR

TEXTILE DESIGN
and ILLUSTRATION



F1 ASSOCIATION OF FASHION AND TEXTILE COURSES AWARD

A fabric design for a specific fashion or interior collection. Illustration and/or visualisation should show different uses of the fabric within a collection.

1st Prize: £500 + certificate **2nd Prize:** £300 + certificate **3rd Prize:** £200 + certificate
Certificates of Commendation are also awarded at the discretion of the Judges.



SPECIAL AWARD FOR

**ANY TEXTILE DESIGN
USING WOOL**



THE COMPANY OF MERCHANTS OF THE STAPLE OF ENGLAND WOOL AWARD



Award for the best design using wool (minimum 60%) chosen from ALL sections of the Design Competition.

Prize £1000.

The Award is open to entrants of ALL sections of the Design Competition. The design should be commercially viable in whichever form you choose to use the wool. To qualify, entries **MUST** contain an overall minimum of 60% wool.

The appropriate box on your Registration Form must be marked to indicate that your design fulfils the requirements of the brief above and you would like your entry to be considered for this Award **in addition to the section of original entry**.

EXPLANATORY NOTES

The Company of Merchants of the Staple of England Award Wool Award is intended to encourage students and designers to use wool (in any form) in their designs. It is a Special Award, to be judged from entries to ALL the sections, provided that the design submitted fulfils the requirements of the brief **ie** the design includes a minimum of 60% wool.

It is not restricted to the constructed textiles, knit and weave, but could apply equally to all the other categories – print, embroidery, combined processes and new technologies.

EXAMPLES

An entry into Section P1 – **A printed textile design for fashion submitted on any base fabric** – could also qualify for entry into the Wool Award so long as the design is printed on to a base fabric containing a minimum of 60% wool.

An entry into Section P2 - **A textile design suitable for domestic curtains, upholstery, cushions and blinds, drawn in repeat. This can be either a printed design using digital or conventional printing, a woven jacquard or woven plain, or for drapery only, an embroidery** – would be eligible for the Wool Award, providing a sample of print on a 60% wool base is included. Paper designs continue to be eligible for the P2 Section but would not qualify for the Wool Award without the actual print sample on wool-rich fabric.

Similarly, an entry into the new Hand-Embroidery Section – E1, would qualify if it was an embroidered design on wool-rich fabric and possibly using wool threads.

Entries to C1, U1 and F1 would also qualify if the wool requirement was satisfied and could encourage some very creative designs!

SPECIAL AWARDS

(These Awards are selected from the winners and commendations of the individual sections.)

THE CAMPAIGN FOR WOOL AWARD

Chosen from the entries in the AW1 and B1 Sections, for a woven or knitted textile design which celebrates the beauty of wool.

Award: £500 + certificate

THE CLOTH OF KINGS AWARD

A textile design which captures the artisan craft and skill of weaving with Noble Fibres such as wool, linen, silk or cashmere or a combination of these fibres, and has a Royal connection written into the story of the design.

Award: Cloth of Kings Medal + certificate

THE DESIGNERS' GUILD PLAQUE

This Award is presented to a university/college or to an individual for outstanding work.

Award: The Designers' Guild Shield

SPECIAL AWARDS

(continued)

THE LUXURY FABRICS AWARD

This is chosen from all prize-winning entries and will be awarded to the entry deemed most outstanding by the Judges. They will be looking for commercial aptitude, taking into consideration sustainability, creativity and innovation.

Award: £350 + certificate

THE TRAVEL AWARD

The recipients of this Award are chosen from the prize-winning and commended entries across all sections of the competition.

Award: An expenses-paid visit to Premiere Vision, Paris for the September Salon, for four prize-winners + certificates

**THE
BRADFORD TEXTILE SOCIETY
DESIGN COMPETITION
2017 – 2018**

CONDITIONS OF ENTRY – PLEASE READ CAREFULLY

CLOSING DATE – FRIDAY 9TH MARCH 2018

To be received at:

**BTS Design Competition
c/o Wool House
Sidings Close
Canal Road
BRADFORD BD2 1AZ**

Email: **secretary@bradfordtextilesociety.org.uk**

Website: www.bradfordtextilesociety.org.uk

Secretary: Sue Geldeard

ENTRANCE FEES

All sections, except for **H1** (students only), **K2, W2 and P3** (1st year undergraduate students only), are open to independent designers, designers employed in the UK textile industry and students from UK universities and colleges. All competitors must be resident in the UK or studying in the UK.

An entrance fee of £20 per entry is payable by independent designers and those employed in the industry.

The entrance fee for students is £10 per entry.

Payment may be made by cash, cheque or Postal Order with the entry, or by a group payment from educational establishments who have notified the Secretary of their intention and request an invoice. Please note - there are NO online payment facilities this year.

Entrance Fees, unless arranged as above, must be submitted at the same time as the entry.

Entries for which no payment has been made will not be entered into the competition.

FORM OF SUBMISSION

Each entry should be mounted on boards. **MAXIMUM SIZE A1 AND A MAXIMUM OF 2 BOARDS PER ENTRY.** Each board MUST have a fully completed Board Label securely fixed to the back of it. The competitor's name MUST NOT appear on the front of the board as this would result in instant disqualification. Please attach, by PAPERCLIP only, **ONE** completed Registration Form per entry, to the Board which contains the Main Sample. **Please do not glue the Registration Form to the board as this is needed for administration.**

Universities and colleges submitting entries on behalf of their students are requested to complete the MULTIPLE ENTRY FORM. Also, students submitting more than one entry are requested to complete a Multiple Entry Form and allocate each entry a letter – a, b, c – this letter can then be recorded on your Registration Form and Board Label so that you can identify your work should it be selected for an award. All required Forms and Labels are included in this prospectus pack.

Each entry submitted to the Design Competition must comply with the conditions stated in the Section brief to which it is entered and should, in all cases consist of:

A MAIN SAMPLE – clearly labelled 'MAIN SAMPLE'. This may be supplemented by not more than 3 alternative colourways or development samples.

TECHNICAL DETAILS – complete and accurate processing details are required for the main sample only. These will be held in the strictest of confidence by the Society and anyone working on the Design Competition. The details should be attached to the front of the board eg underneath the sample (so long as they can be accessed). In addition to the basic technical/making details noted for the Main Sample, please provide a brief statement indicating how your entry contributes to responsible design. For example, what are the environmental or sustainable considerations?

An individual design can only be entered into one section. An entrant may, however, submit more than one entry, of different designs. There is no limit to the number of entries or different sections entered.

COPYRIGHT

Whilst the copyright of all work submitted to the Design Competition remains with the entrant, Bradford Textile Society reserves the right to use the work in publicity material, published both in hard copy and on the internet.

JUDGING

The Judges' decision shall in all cases be final and binding.

The Judges' reserve the right to satisfy themselves of the authenticity of any work. If an entry is considered to be an infringement of the Conditions of Entry it will be disqualified without refund.

**THE
BRADFORD TEXTILE SOCIETY
DESIGN COMPETITION
2017 – 2018**

GUIDANCE NOTES FOR ENTRANTS AND TUTORS

GENERAL

- All entries into the Design Competition must include a clearly marked Main Sample. The entry will be judged on the Main Sample so please take time to consider which sample you designate as your main one.
- Basic technical/making details should be included for the Main Sample only. These details must be attached (securely, please) to the front of a board or under the sample (as long as the sample can be lifted easily to reveal the information required).
- Comprehensive Guidelines for the content of technical information are given on Page 20 and include such details as:- yarn compositions, base fabrics, type of printing, machines used etc, all as appropriate for the particular section entered. It is, however, appreciated that not all information may be available to you. Any information which is given will be treated in the strictest confidence by everyone involved in the organisation and judging of the competition.
- Please take time to consider whether you have entered your work into the most appropriate section of the Design Competition and that you have fulfilled the requirements of the section brief. Your work will then have the best possible chance of being selected for an award.
- All work should be mounted in such a way that it will withstand being displayed in exhibition conditions if it is selected for an award. Masking tape does not hold textile pieces and double-sided tape is not always reliable, the heat generated from exhibition lighting can have adverse effects on the glue of double-sided tape causing the work to fall off which could be detrimental to it. Please try to stitch or use wire to secure textile work.
- Please think carefully about the safety of others before including in your entry anything which could be harmful to those people who have to handle the boards. In recent years we have had entries with items of cutlery, double-pointed knitting needles and pieces of sharp metal and plastics. By all means include what you like but please ensure it is safe by taping sharp points and edges. Thank you

RESULTS

- The Winners List will be published on the Bradford Textile Society website by mid-April 2018. Winners will be notified by email so please include a legible, current email address on your Registration Form. www.bradfordtextilesociety.org.uk

DESIGN SEMINAR AND AWARDS CEREMONY

- Award-winning and commended work will be on public display at the Dye House Gallery, Carlton Street, Bradford, **8th - 10th MAY, 2018**.
- The Design Seminar and Award Ceremony will take place at the above Gallery on **FRIDAY 11th MAY, 2018**

RETURN OF WORK

- All exhibited work will be available for collection from the Dye House Gallery after the Awards Ceremony. Non-exhibited work can also be collected after the Awards Ceremony from the Gallery provided that arrangements have been made with the Secretary by **20 APRIL, 2018**.
- Entries from students will be re-packed in their respective university parcels. It is impossible to pack each piece of work individually in the time available and with limited personnel.
- Entries from independent designers will be packed individually.
- It is the responsibility of the entrant/university/college to make arrangements and pay for work to be returned. Any work not collected from the Dye House Gallery after the Award Ceremony **MUST** be re-claimed and removed before **30 JUNE, 2018**. We do not have storage facilities beyond this date and any remaining work will be deemed unwanted and disposed of – sorry.
- Couriers may be used to collect work but please inform the Secretary of the Society to make arrangements.
- Alternatively, the Royal Mail online parcel service has proved to be very easy to use and cost-effective. Comprehensive instructions are given below.
- Please consult the Society's website regularly for further updates and information on the Design Competition.

www.bradfordtextilesociety.org.uk

THANK YOU AND THE BEST OF LUCK!

Sue Geldeard
Secretary
Bradford Textile Society

ROYAL MAIL ONLINE POSTAL SERVICE.

ROYALMAIL.COM

+

SENDING MAIL (top left button)

+

UK DELIVERY – SENDING PARCELS

+

GET A PRICE

+

UK – NEXT

+

PARCEL

+

WEIGHT OF PARCEL

+

CHOOSE SERVICE AND PAY BY CREDIT CARD

+

FORWARD EMAIL WITH PREPAID POSTAGE LABEL TO

secretary@bradfordtextilesociety.org.uk

IMPORTANT REMINDER

The deadline for reclaiming work is **30th JUNE, 2018.**

We do not have any storage facilities after this date and any work not claimed will be deemed unwanted and disposed of. It would be best if universities/colleges would make arrangements to have work returned on behalf of their students as student entries will be packaged in parcels for the universities/colleges. Ultimately, however, it is up to the entrant to make sure they receive their work back so please contact the secretary of Bradford Textile Society if you are at all unsure.

secretary@bradfordtextilesociety.org.uk

**THE
BRADFORD TEXTILE SOCIETY
DESIGN COMPETITION
2017 – 2018**

RECOMMENDED TECHNICAL DETAILS

WOVEN TEXTILES

- No. of ends & picks per 10 cms
- Warp and weft yarn details (counts and compositions)
- Weave, draft and peg plan (graph for Jacquards)
- Warp and weft colour plans
- Fabric weight in gm/sq.m
- Brief outline of fabric finishing and proposed end use.

KNITTED TEXTILES

- Machine type and gauge
- Yarn details (counts and compositions)
- Weft-knitted fabrics - 1 repeat shown as a stitch diagram or graph plus colour/feeder sequence
- Warp-knitted fabrics - 1 repeat of lapping diagrams with guide bar colour and threading order
- Fabric weight in gm/sq.m for full width fabrics only
- Brief outline of fabric finishing and proposed end use.

EMBROIDERED TEXTILES

- Details of fabrics used (weights and compositions)
- Details of threads used and any decorative items such as buttons, beads, lace etc
- Description of techniques used, including any special finishing
- For machine embroidery: machine and stitch type.

PRINTED TEXTILES

- Method of printing with details of number of screens, rollers or digital printing
- Palette of colours used in the Main sample
- Any special fabric finishing treatments eg devoré
- Dimensions of design repeat in cms
- Description and composition of the proposed base fabric
- Type of dyestuffs used
- Brief outline of fabric finishing and proposed end use.

COMBINED PROCESSES AND MIXED MEDIA

- Full technical details appropriate to the materials, techniques and processes involved, using the previous guidelines.

RESPONSIBLE DESIGN

In addition to the basic technical/making details noted for the Main Sample, please provide a brief statement indicating how your entry contributes to responsible design. For example, what are the environmental or sustainable considerations?

<p>THE BRADFORD TEXTILE SOCIETY DESIGN COMPETITION 2017 – 2018</p> <p>IMPORTANT – PLEASE GLUE COMPLETED COPIES OF THIS LABEL TO THE BACK OF EACH BOARD USED PER ENTRY</p>			
<p>FULL NAME (in block capitals please)</p>			
<p>NAME OF UNIVERSITY, COLLEGE OR COMPANY</p>			
<input style="width: 100%; height: 20px;" type="text"/>	<input style="width: 100%; height: 20px;" type="text"/>	<input style="width: 100%; height: 20px;" type="text"/>	<input style="width: 100%; height: 20px;" type="text"/>
<p>PLEASE INDICATE SECTION ENTERED</p>	<p>NUMBER OF BOARDS IN THIS ENTRY (1 OR 2)</p>	<p>BOARD NUMBER 1/1: 1/2: 2/2</p>	<p>THE STAPLE SPECIAL AWARD (X for inclusion)</p>
<p>THE BRADFORD TEXTILE SOCIETY DESIGN COMPETITION 2017 – 2018</p> <p>IMPORTANT – PLEASE GLUE COMPLETED COPIES OF THIS LABEL TO THE BACK OF EACH BOARD USED PER ENTRY</p>			
<p>FULL NAME (in block capitals please)</p>			
<p>NAME OF UNIVERSITY, COLLEGE OR COMPANY</p>			
<input style="width: 100%; height: 20px;" type="text"/>	<input style="width: 100%; height: 20px;" type="text"/>	<input style="width: 100%; height: 20px;" type="text"/>	<input style="width: 100%; height: 20px;" type="text"/>
<p>PLEASE INDICATE SECTION ENTERED</p>	<p>NUMBER OF BOARDS IN THIS ENTRY (1 OR 2)</p>	<p>BOARD NUMBER 1/1: 1/2: 2/2</p>	<p>THE STAPLE SPECIAL AWARD (X for inclusion)</p>

**THE
BRADFORD TEXTILE SOCIETY
DESIGN COMPETITION
2017 – 2018
REGISTRATION FORM**

ONE separate Registration Form must be completed for each individual entry and must be attached to the entry by means of a paperclip only.
PLEASE DO NOT GLUE THIS TO YOUR ENTRY.

FULL NAME

ADDRESS (Home)

.....

CONTACT TELEPHONE NUMBER. **AGE (if under 30 years)**

EMAIL (Please print) **NATIONALITY**

IF ATTENDING A UNIVERSITY/COLLEGE PLEASE STATE THE NAME
.....

METHOD OF PAYMENT

**CASH AMOUNT
ENCLOSED**

**CHEQUE AMOUNT
ENCLOSED**

**PART OF GROUP
PAYMENT (X)**

PLEASE MARK THE CORRECT BOX – ENTRIES WITH INCORRECT/NO PAYMENT DETAILS MAY BE DISQUALIFIED!

THIS ENTRY IS SUBMITTED FOR SECTION (Please mark (X) the appropriate box)

SECTION	E1	SECTION	P3	SECTION	B1
SECTION	K1	SECTION	W1-F	SECTION	H1
SECTION	K2	SECTION	W1-N	SECTION	C1
SECTION	P1	SECTION	W2	SECTION	U1
SECTION	P2	SECTION	AW1	SECTION	F1

I certify that this entry is solely my own work. Signed

I would like my entry to be considered for The Company of Merchants of the Staple of England Award (✓ if applicable)

I certify that my design includes a minimum of 60% wool. SIGNED

Continuation Sheet No.

University/College

ENTRANT'S NAME	E1	H1	K1	K2	P1	P2	P3	W1- F	W1- N	W2	AW 1	B1	C1	U1	F1	TOTAL ENTRIES PER ENTRANT	TOTAL BOARDS PER ENTRANT
B/F FROM PREVIOUS SHEET																	
TOTALS																	

FINAL SHEET ONLY – PLEASE ENTER THE FOLLOWING TOTALS:-

TOTAL NUMBER OF ENTRANTS **TOTAL NUMBER OF ENTRIES.....** **TOTAL NUMBER OF BOARDS**

CONTACT EMAIL FOR TUTOR